

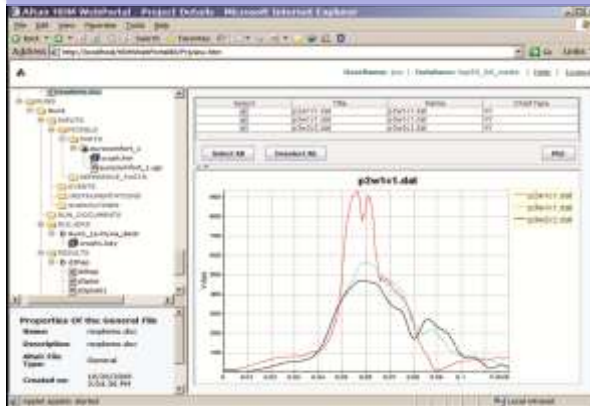
# HyperWorks Enterprise – 2010 Product Overview

---

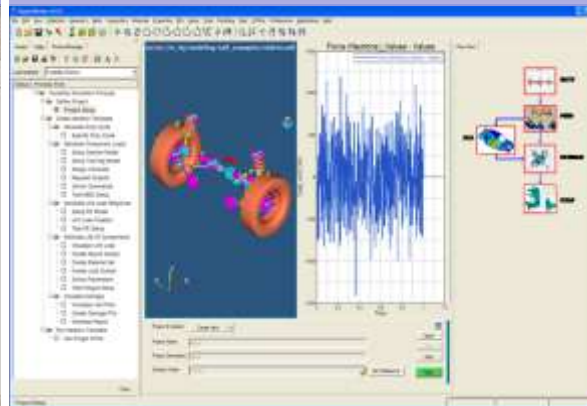
**Altair Engineering, Inc. – October 2010**

# 2010: HyperWorks **Enterprise** Next Generation

2002



2008



2010



## Altair Process & Data Managers

were born leveraging years of Altair's experience in CAE data & Process management.

Hundreds of HW customers are using them today

A project has been initiated to restructure the HWE products line-up:

- Learning from 10+ years of experience
- Using novel technologies
- Enhancing the integration w/ HyperWorks

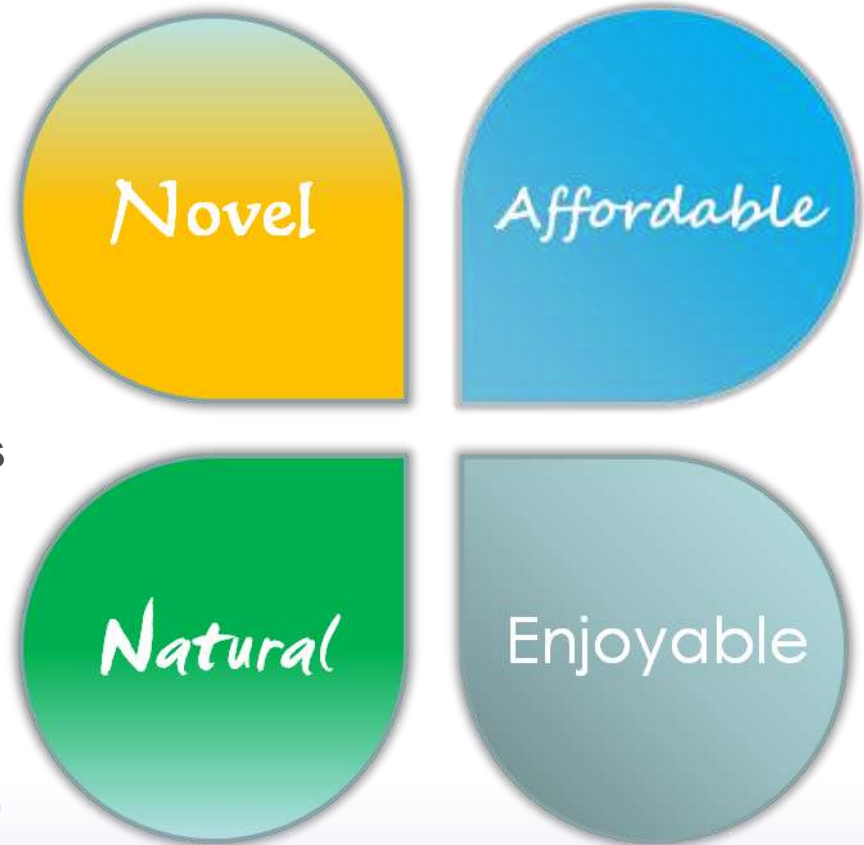
The initiative has led to the release of new/ revised products

- Making Enterprise process and data management a natural, enjoyable experience

# Altair HyperWorks **Enterprise**

Liberate Engineers Creativity,  
pursuing Simulation-driven  
Innovation in a highly  
collaborative environment

A collection of software modules  
tightly, seamlessly integrated  
with HyperWorks



## The right Functionality for the Right Purpose

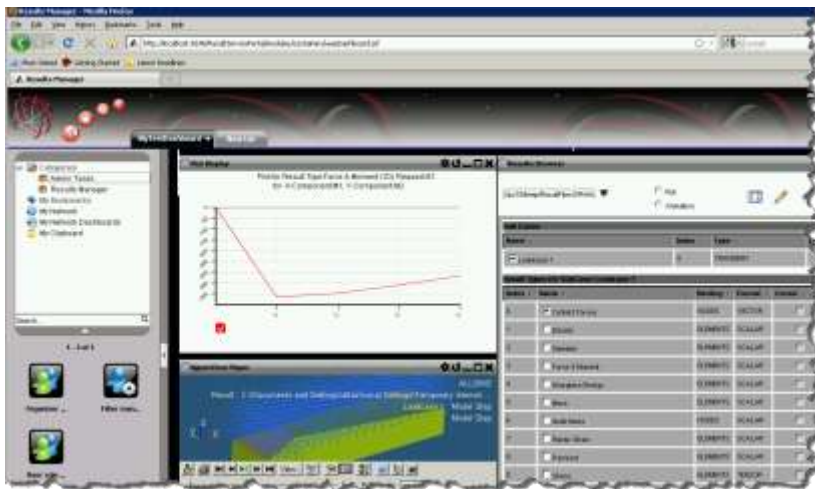
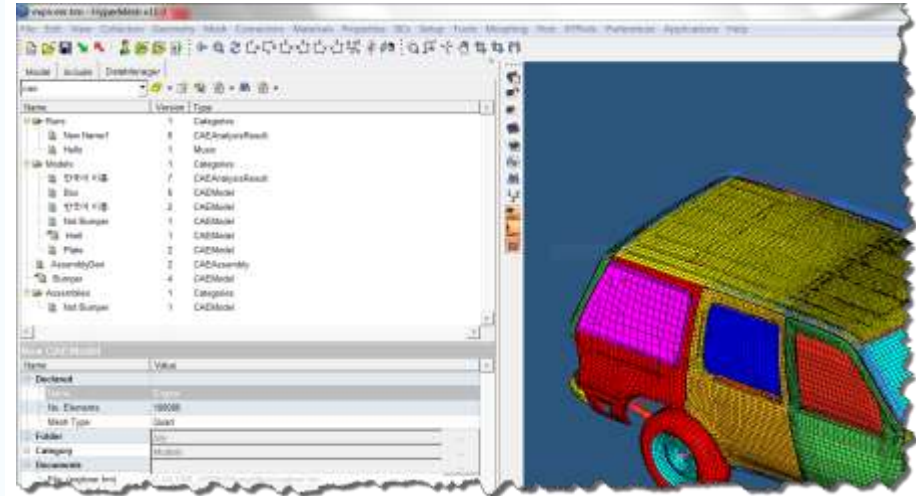
**Bottom-up approach to satisfy the typical enterprise needs at different organizational level, providing the HyperWorks users a natural experience without forcing or confining them.**



# A Natural and Enjoyable Enterprise User Experience

## Personal/Team Level

Tightly integrated into the HW panels  
Naturally bring enterprise capabilities  
into HyperWorks Desktop



## Enterprise Level

Web-based widgets to access to enterprise  
data everywhere, anytime  
The most natural, yet powerful data  
browsing

# Explore, Connect, Organize



**Name:** Jason C.

**Position:** Crash Engineer

**Notes:** Lucy's teammate

**Name:** Lucy M.

**Position:** FE Structural Engineer

**Notes:** She works with Jason

**Name:** Adam K.

**Position:** FE Manager

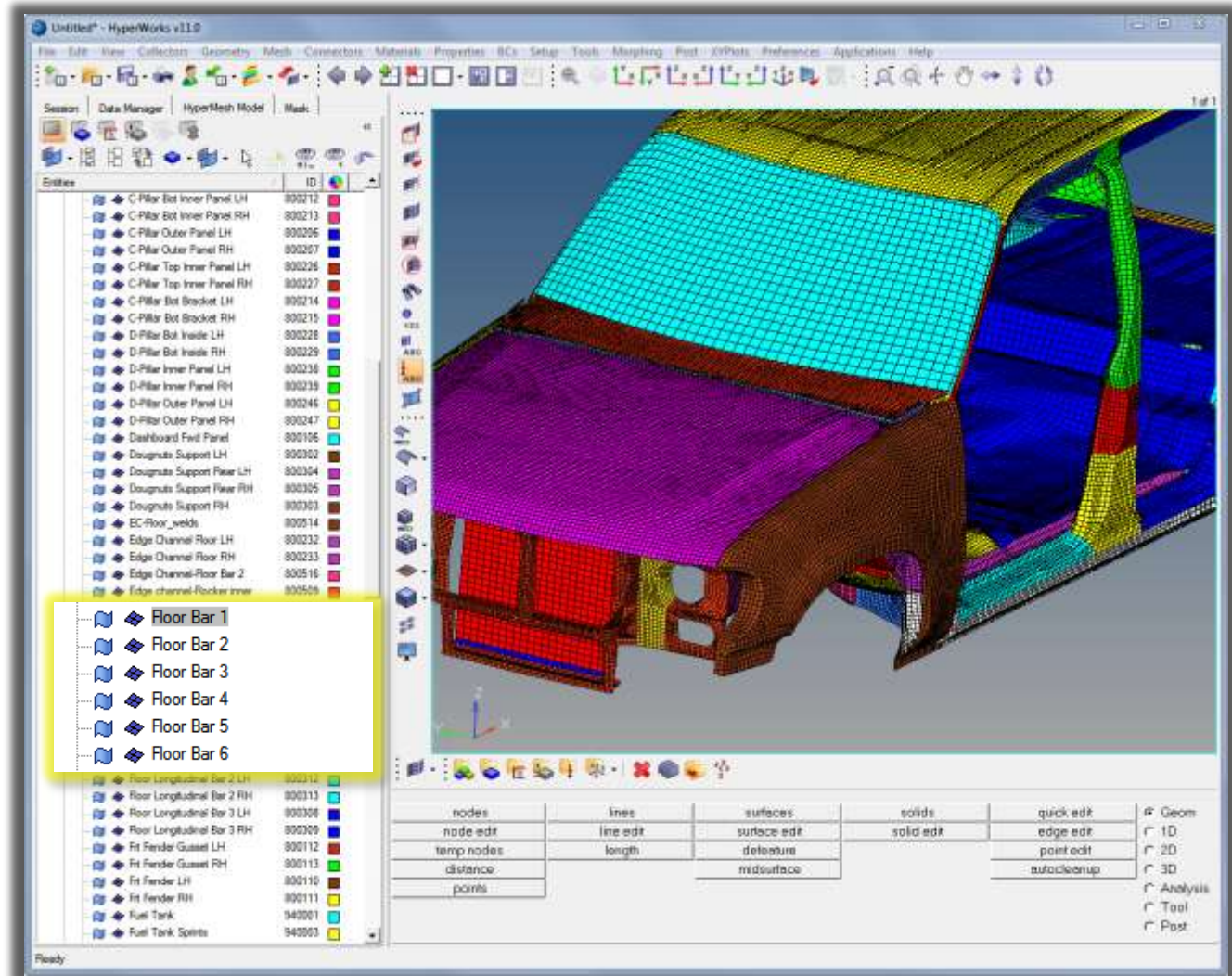
**Notes:** Jason's and Lucy's manager

**Name:** John L.

**Position:** CAE Director

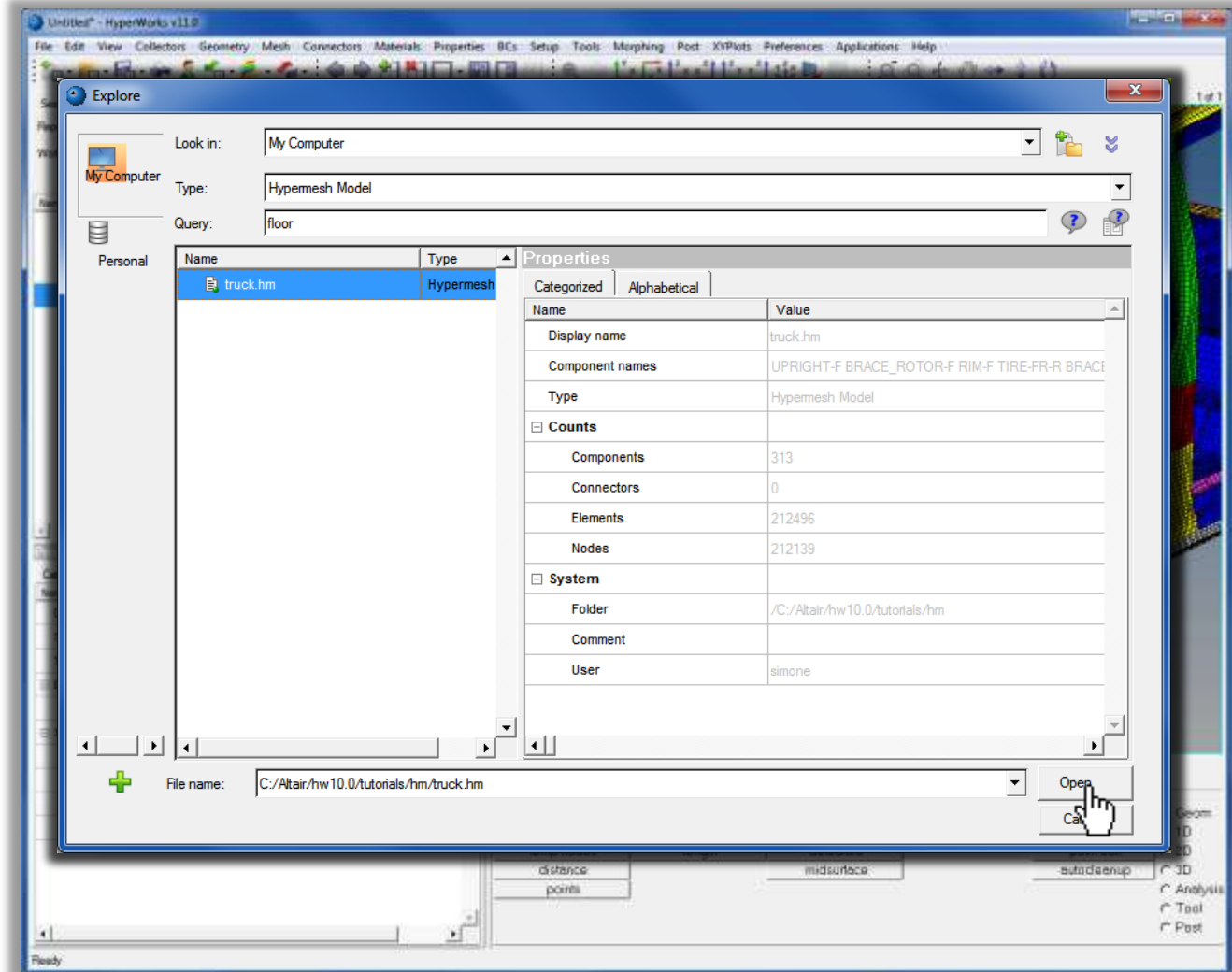
**Notes:** He's the boss 😊

# Explore CAE Data Easily and Quickly



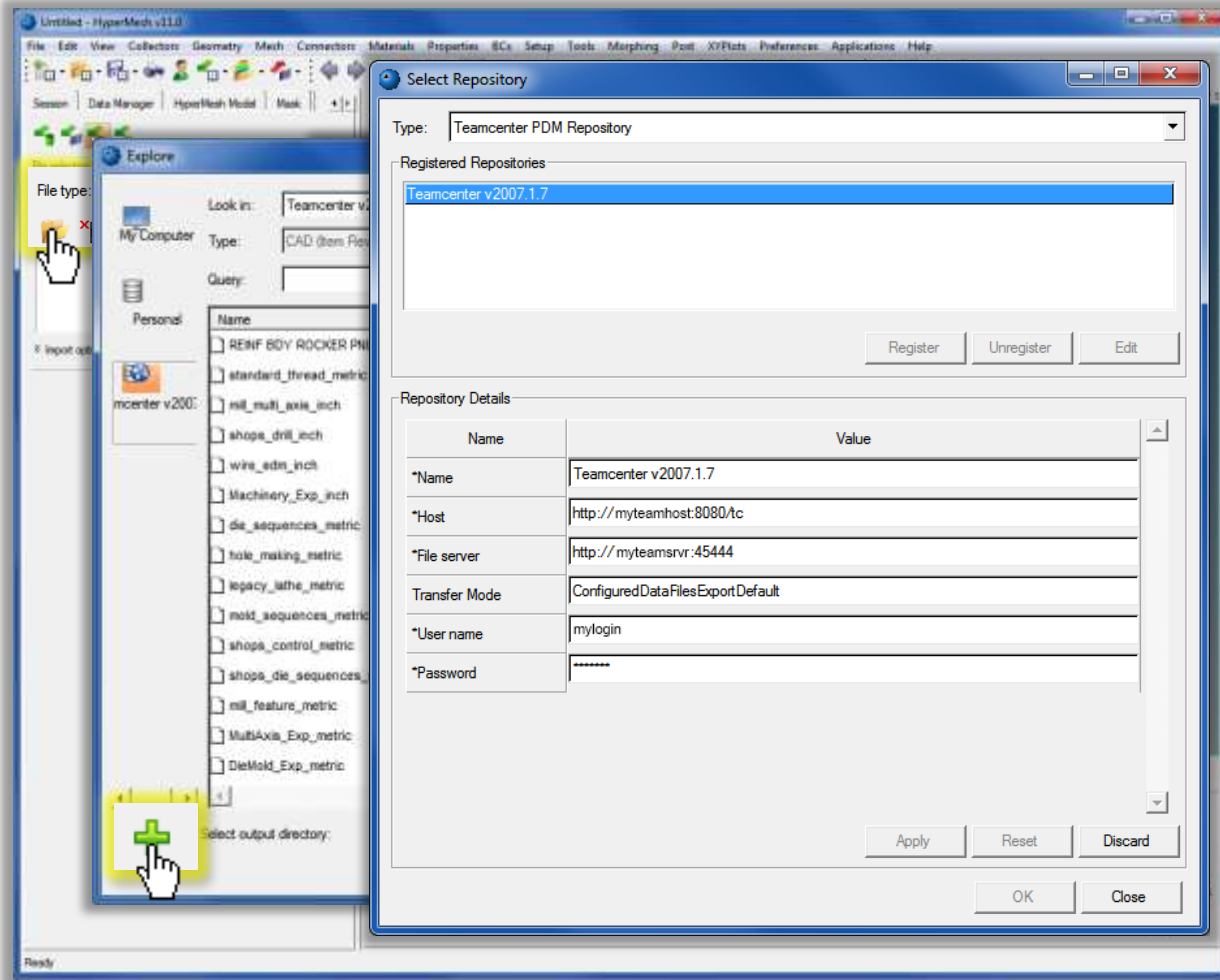
Access your data more easily, from all native desktop dialogs

# Explore CAE Data Easily and Quickly



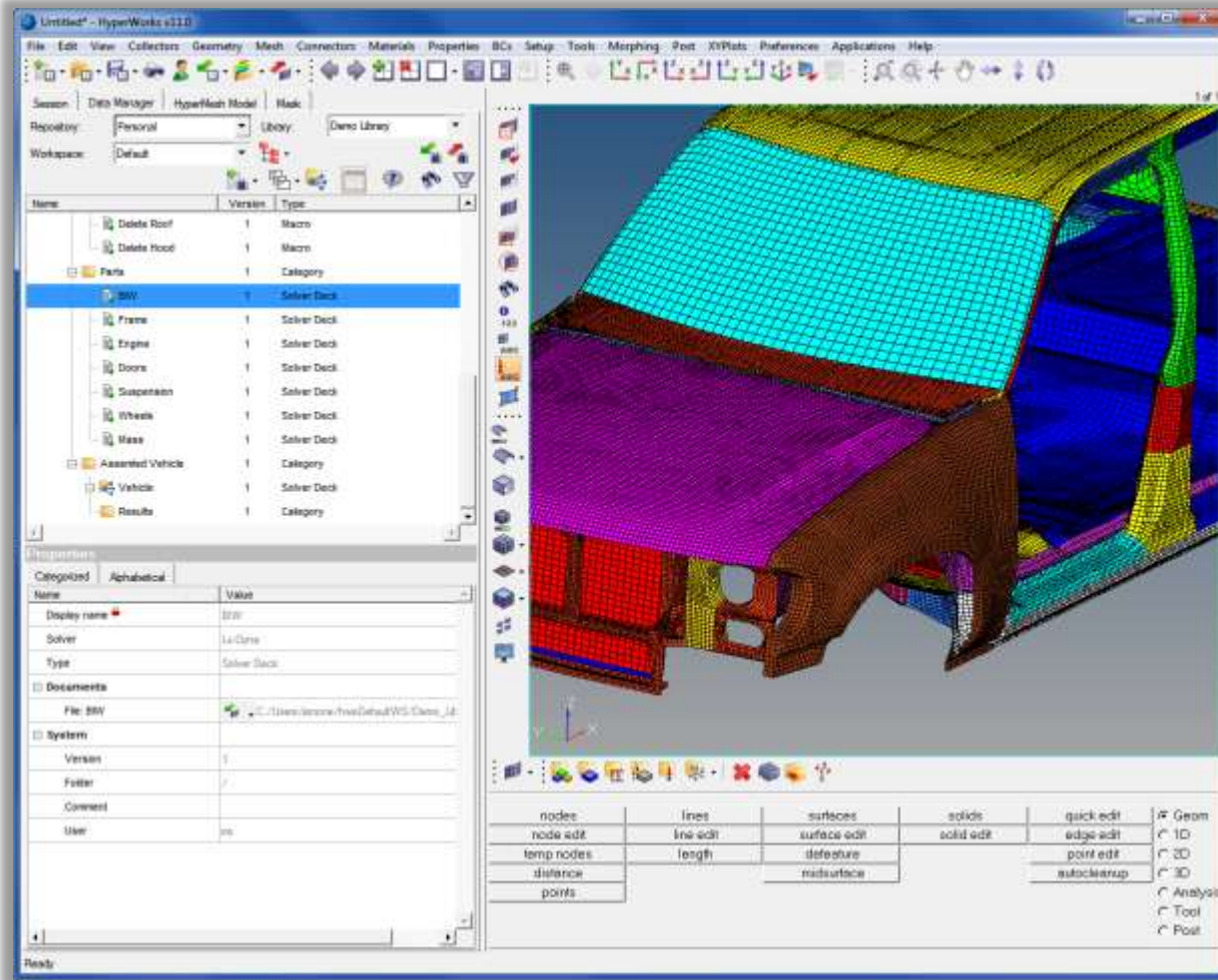
Capture knowledge via automatic metadata extraction

# Connect CAE to CAD



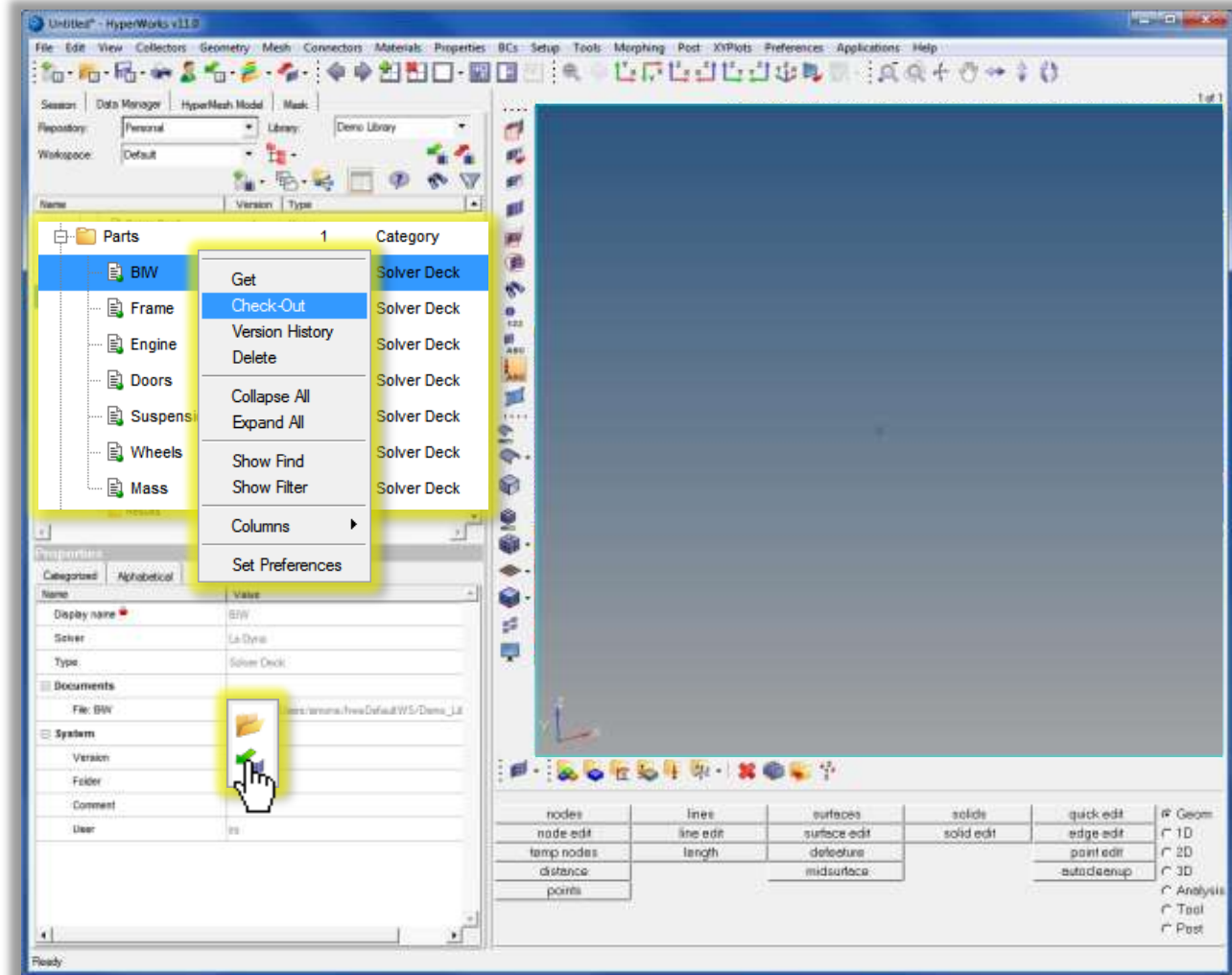
Seamlessly connect to corporate PLM systems

# Connect CAE to CAD



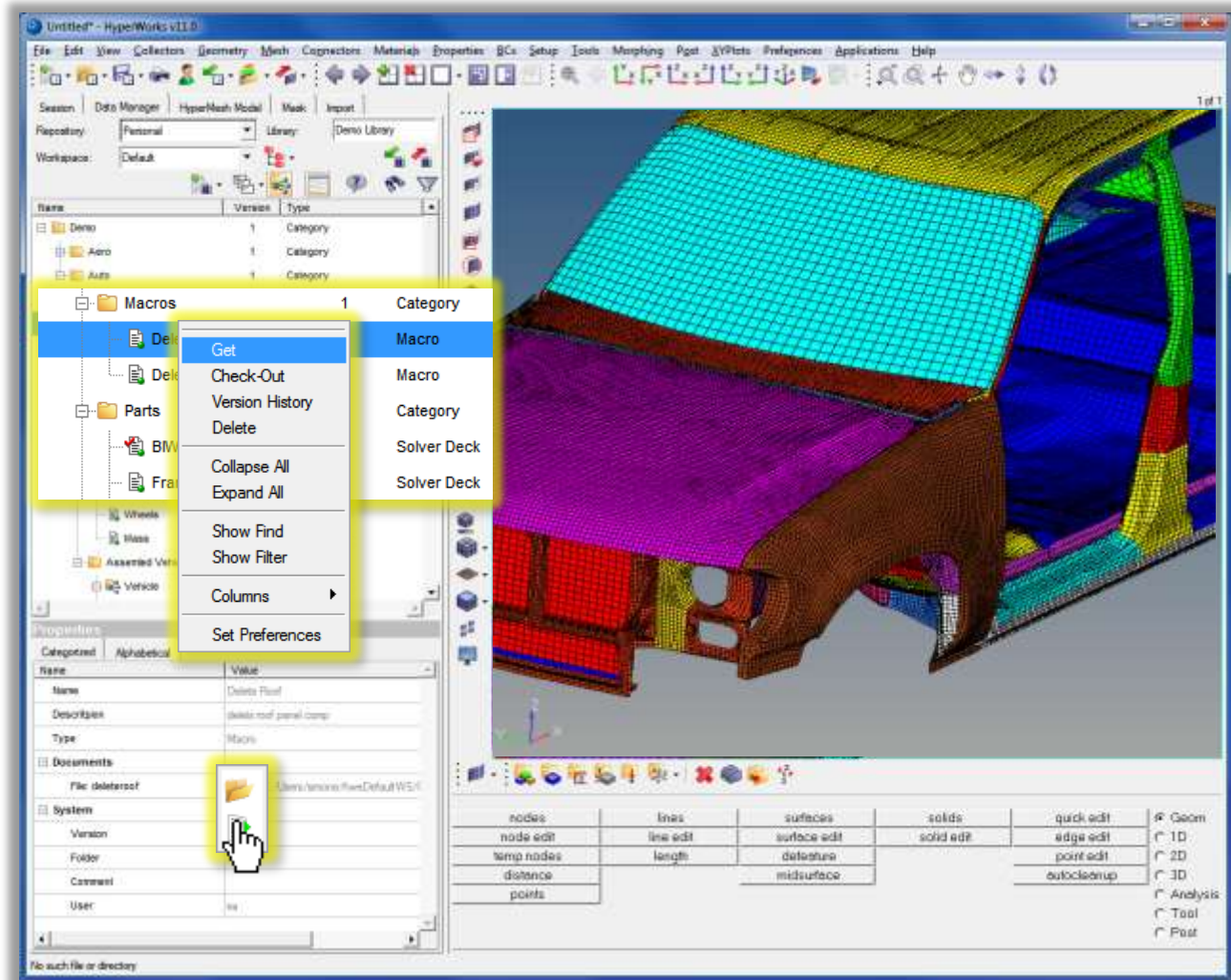
Search & retrieve directly within PLM repository

# Organize Personal and Team Data



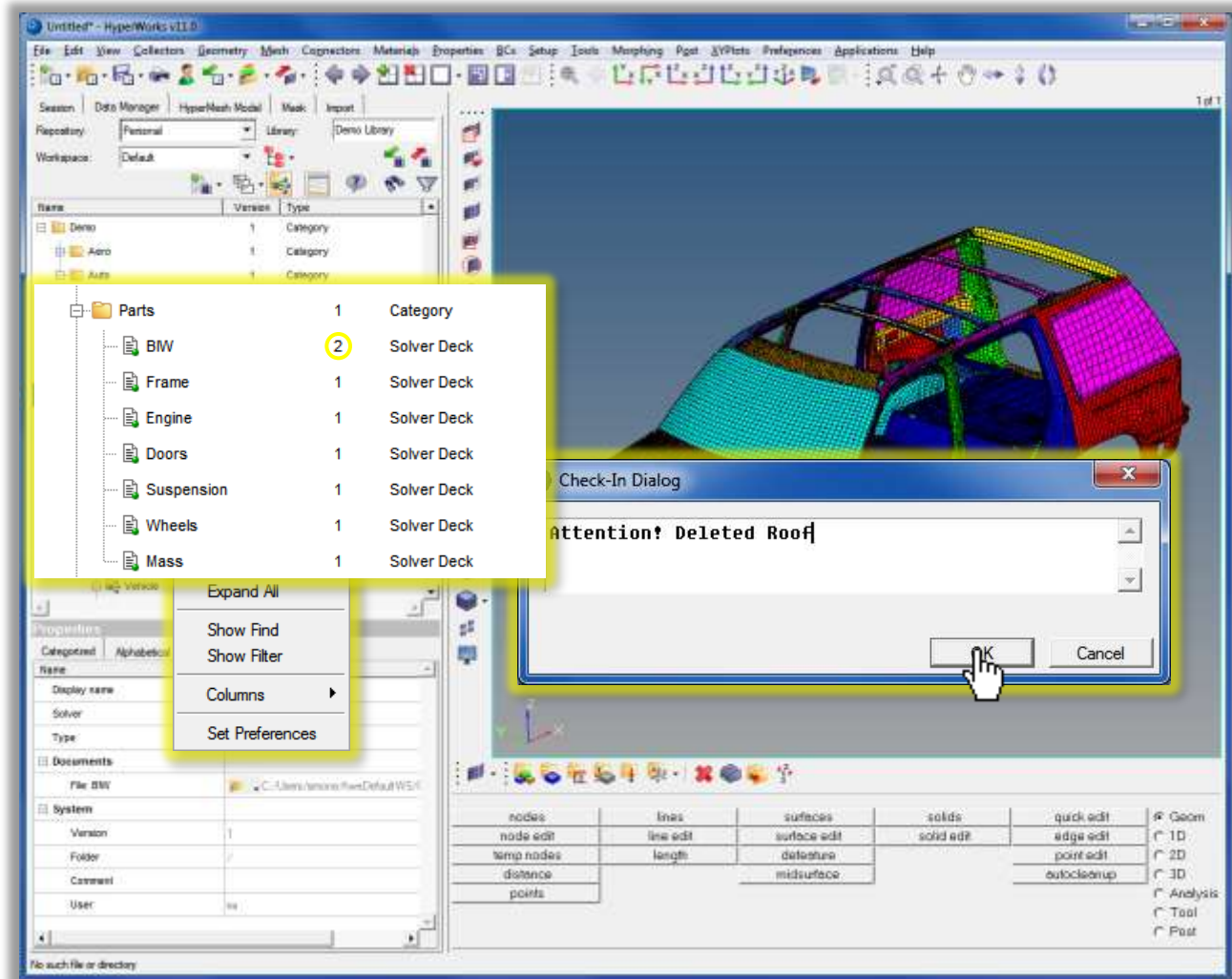
Organize simulation data and files into libraries

# Organize Personal and Team Data



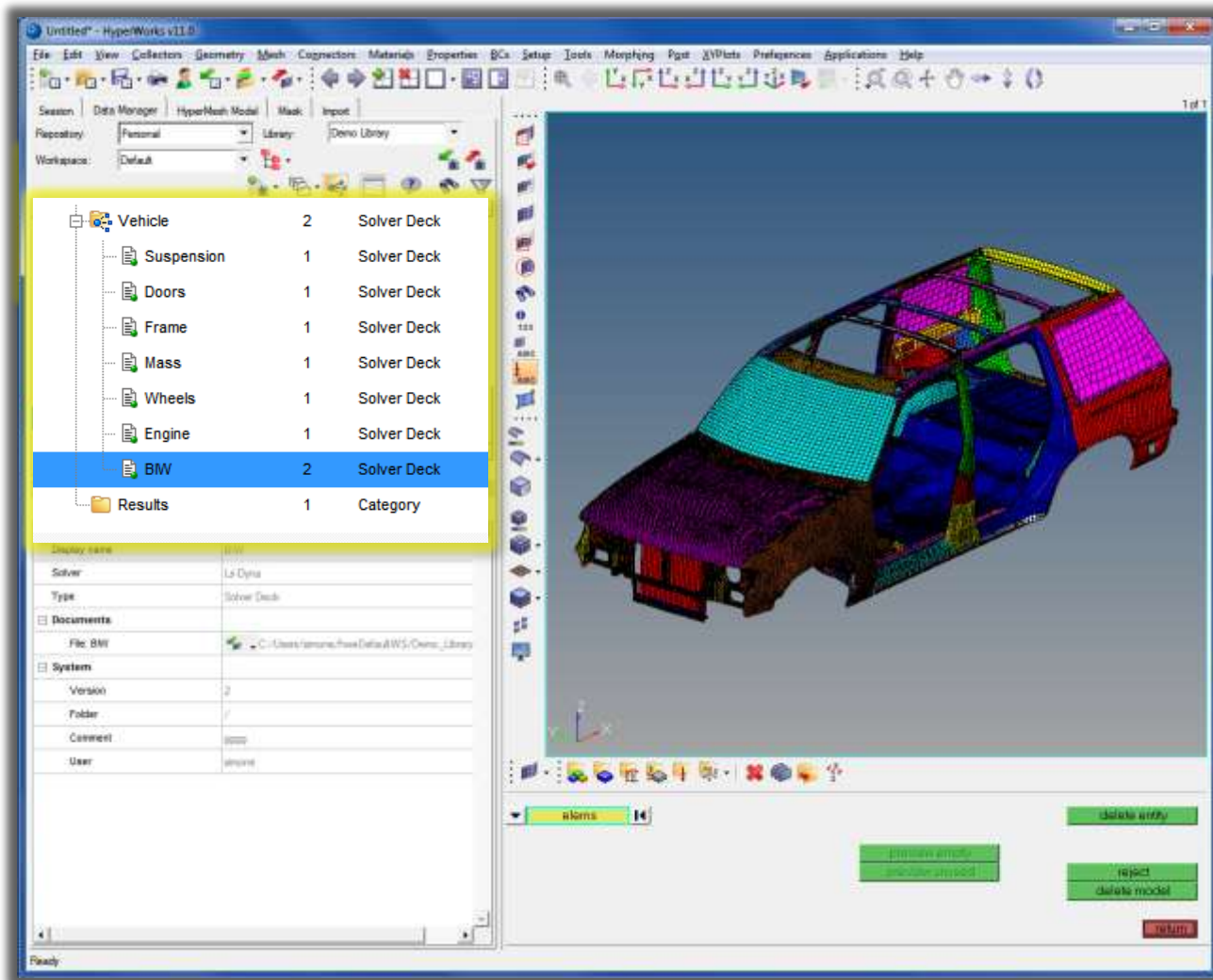
Browse libraries to find and retrieve contents

# Organize Personal and Team Data



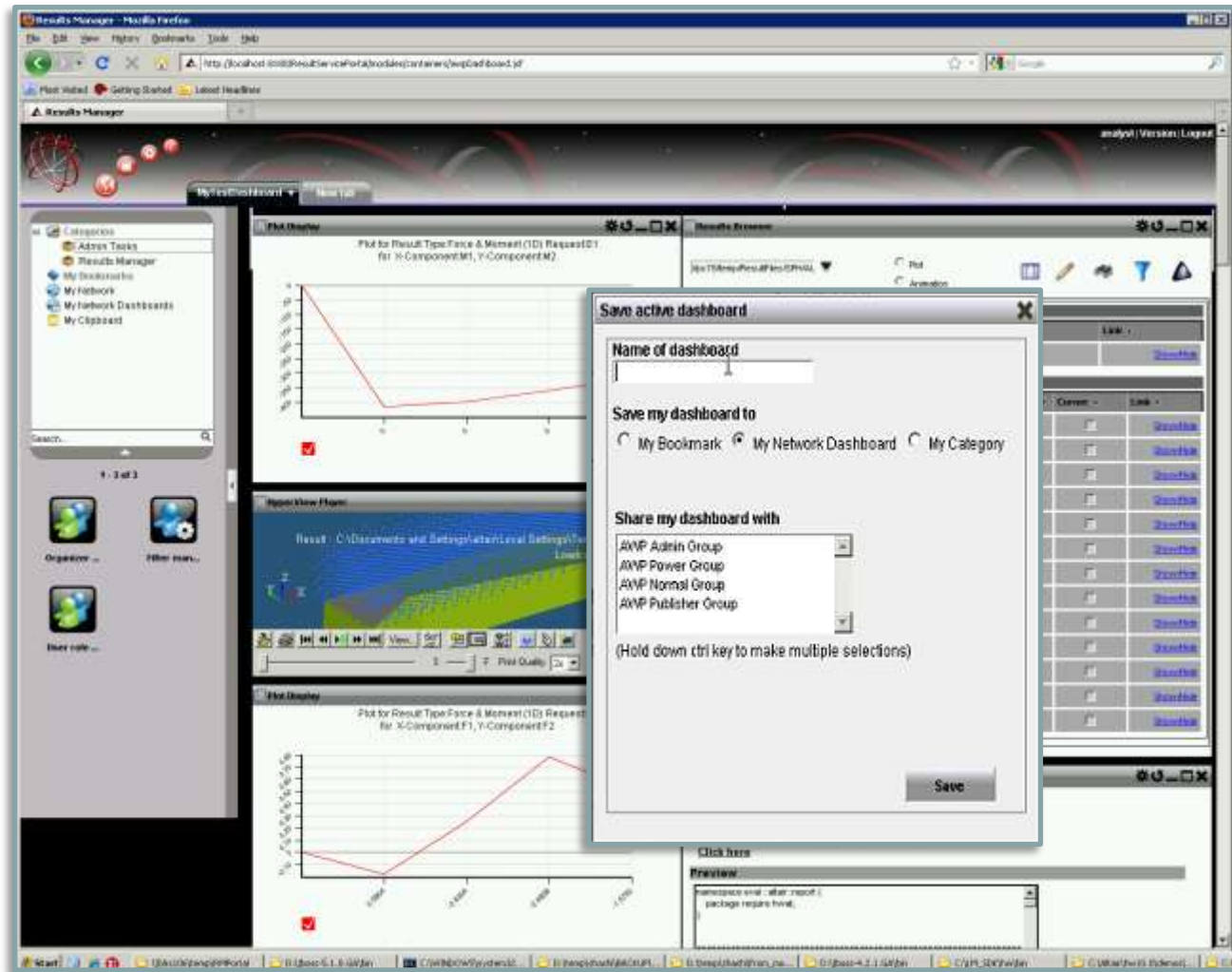
Retain pedigree via full version control

# Organize Personal and Team Data



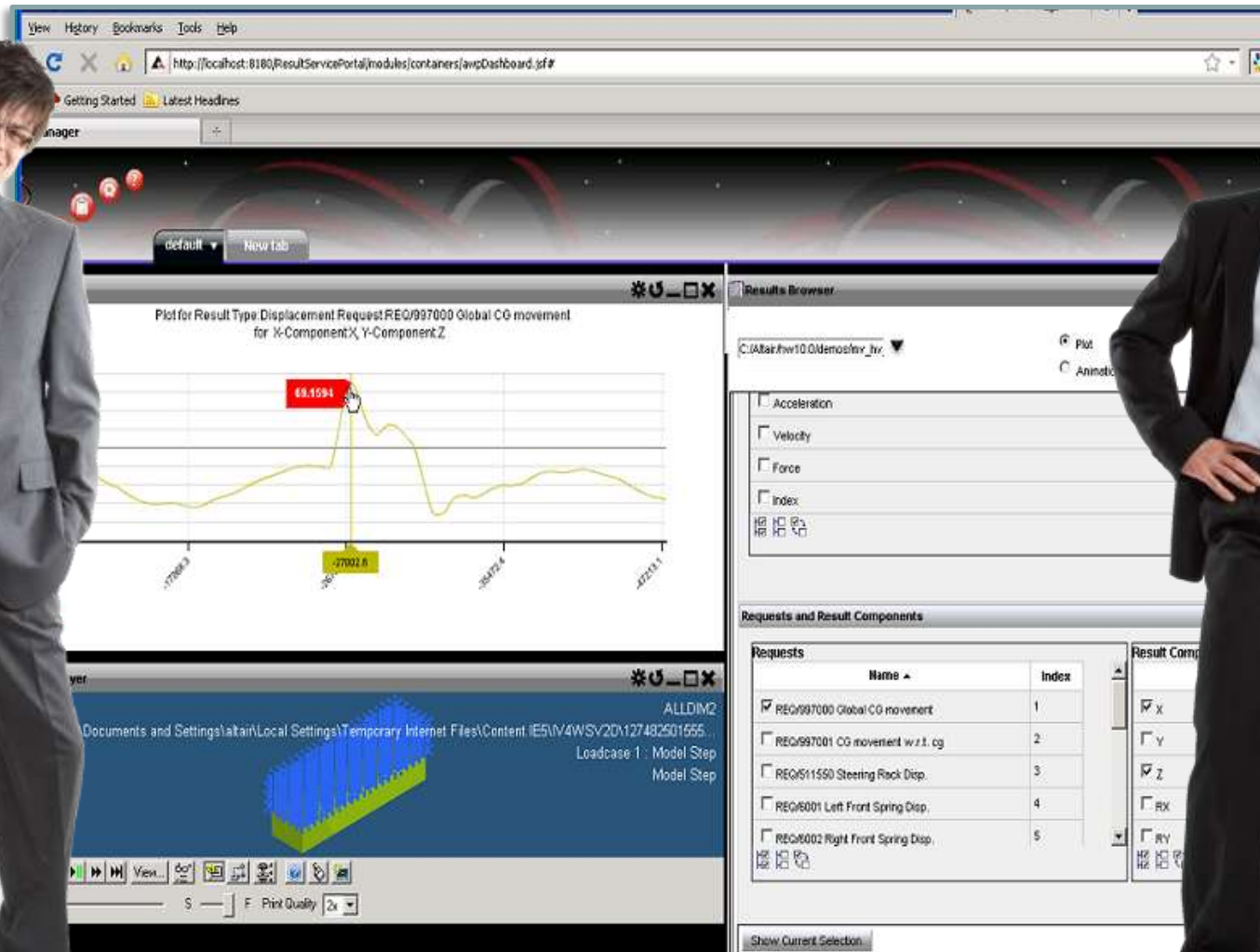
Synchronize to work with up to date information

# Connecting the Team to the Enterprise



Share, Publish, Elevate

# Connecting the Team to the Enterprise



Share, Publish, Elevate

# Connecting the Team to the Enterprise

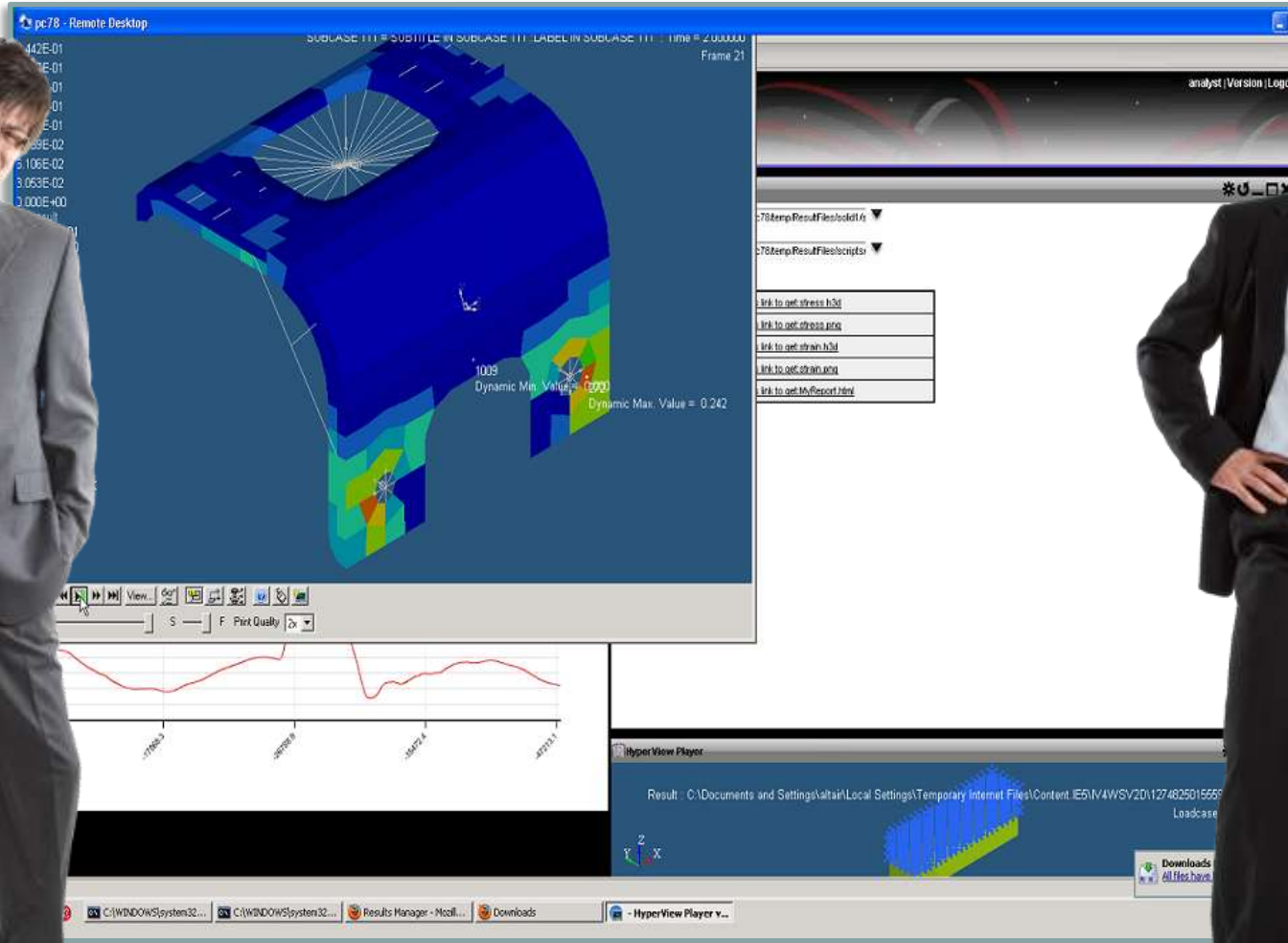


The screenshot displays the HyperWorks Results Manager web interface. It features two main plot areas on the left. The top plot, titled 'Plot for Result Type Acceleration RequestREQ/997003 CG Acceleration w.r.t. cg for X-ComponentX, Y-ComponentZ', shows a yellow line graph with a peak labeled '11517.08' and a time marker '155.233'. The bottom plot, titled 'Plot for Result Type Displacement RequestREQ/997000 Global CG movement for X-ComponentX, Y-ComponentZ', shows a red line graph. On the right side, the 'Script Executor' panel allows users to select result files and scripts, with a table of links for files like stress.h3d, stress.png, strain.h3d, strain.png, and MyReport.html. At the bottom, the 'HyperView Player' shows a 3D model of a component with a blue and yellow stress distribution.



Share, Publish, Elevate

# Connecting the Team to the Enterprise



Share, Publish, Elevate

## Altair HyperWorks Enterprise: Expect **More!**

What You Are Expecting from an Enterprise Solution...and Much More!

SEAMLESS **DATA TRANSFER** BETWEEN MACHINES AND CLUSTERS

EASILY MANAGE AND **MONITOR** COMPUTE **RESOURCES**

SOFTWARE **LICENSES** UTILIZATION **ANALYTICS**

GENERATE RESULTS ON THE SERVER VIA **WEB PORTAL**

**GRAPHICAL DIAGNOSIS** OF RUNNING JOBS

PUBLISH AND **SHARE REPORTS**

**CORRELATE CAE** AND **TEST RESULTS**

AUTOMATED COMPLEX **REPORT GENERATION**

# HWE: a User Centric Enterprise Experience



## A Natural Experience

Transferring user's experience into better performing products

## From Archiving to Knowledge

Find the information you need, when you need

## Simulation-driven Design Enabler

Experiment virtually unlimited risk-free alternatives

## Share Your Experience

In a secure, highly collaborative and user-friendly environment

# Altair Innovation Intelligence



**Our Mission is to innovate  
and to enable innovation  
for our customers**

# Thank you!